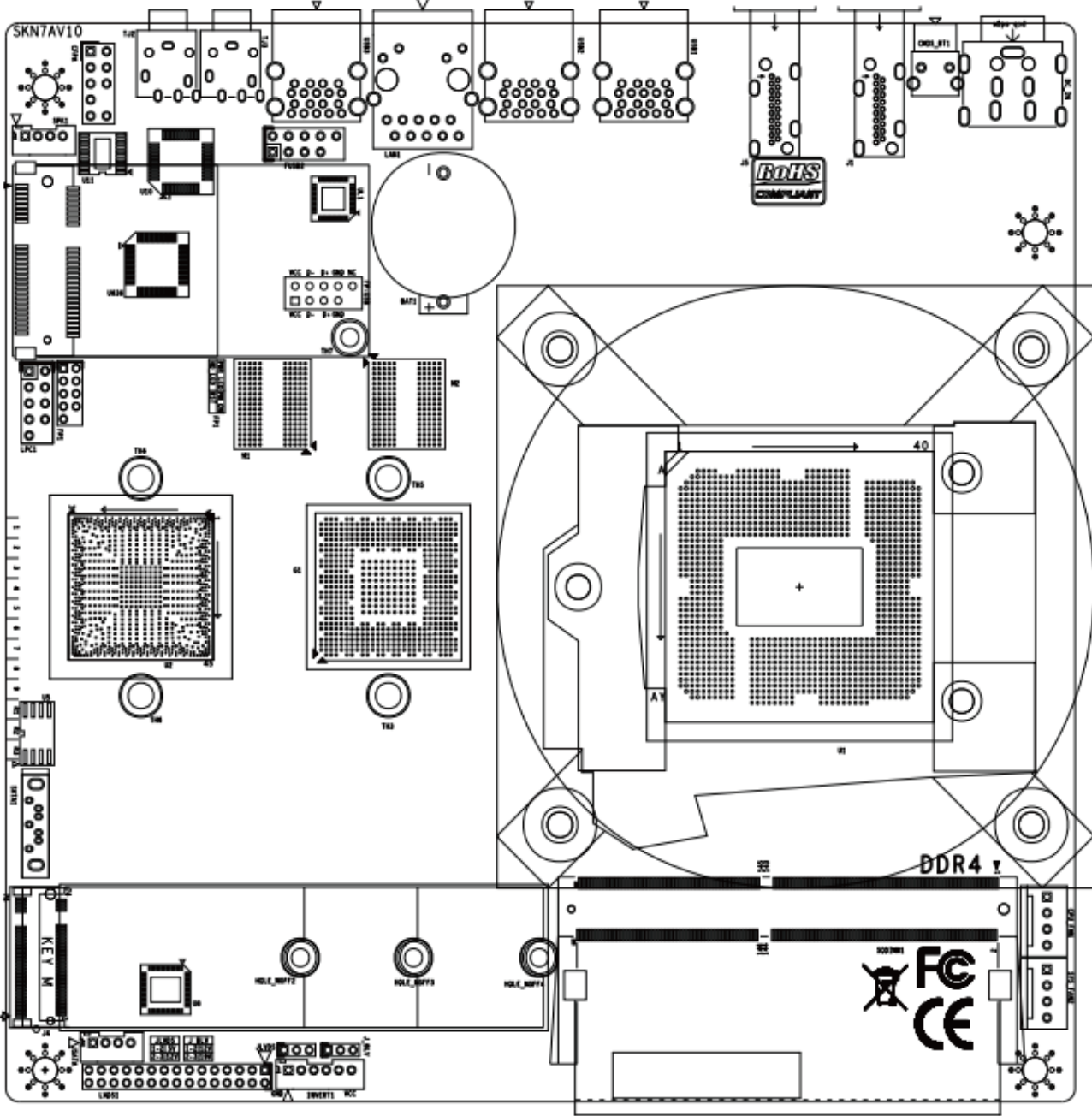


ZA-SK730 Motherboard

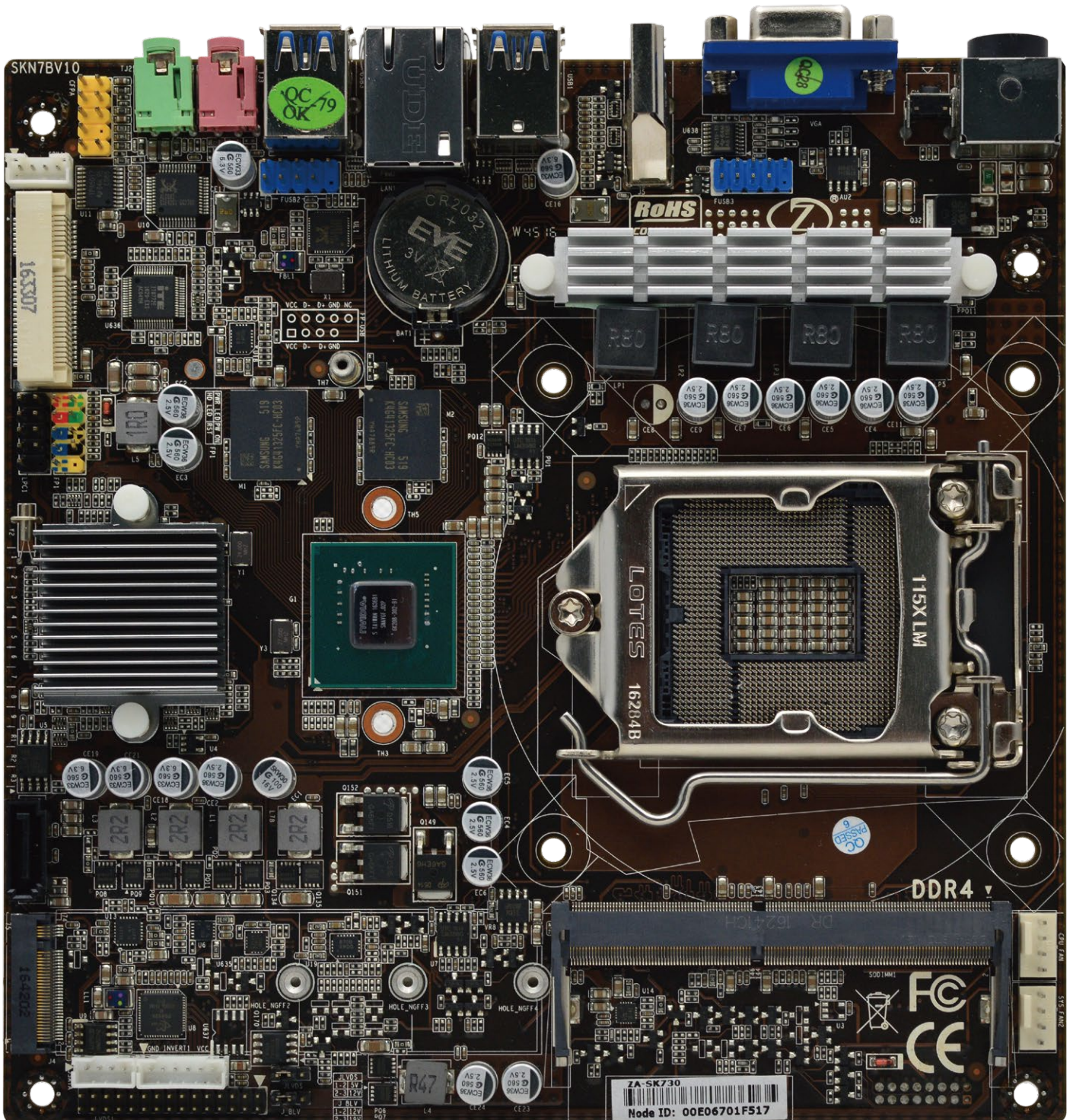
User Manual

Intel[®] Corei7/Corei5/Corei3 Pentium Processor

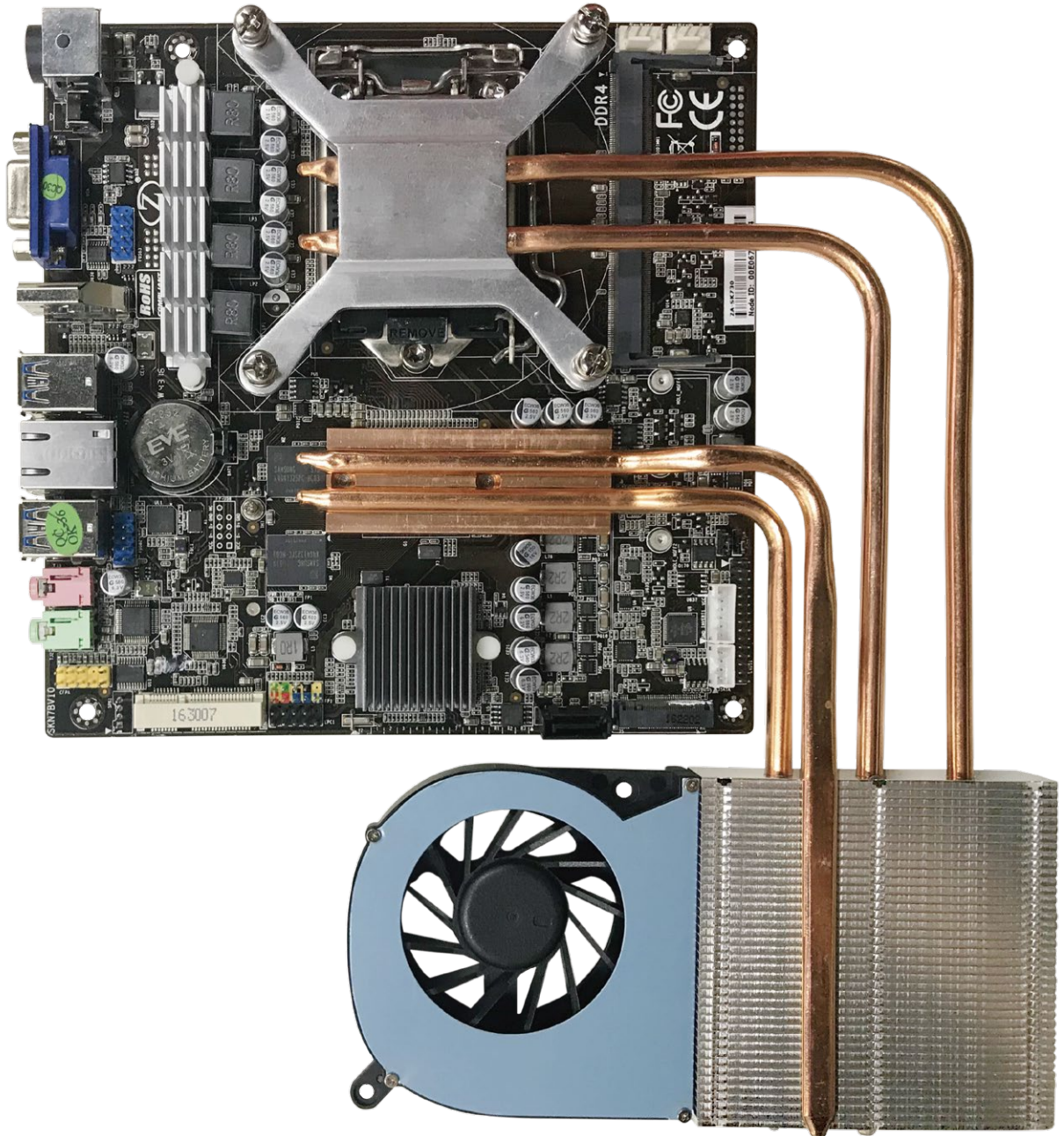
ZA-SK730 Motherboard Configuration Diagram



ZA-SK730 Motherboard Diagram



ZA-SK730 Motherboard Diagram

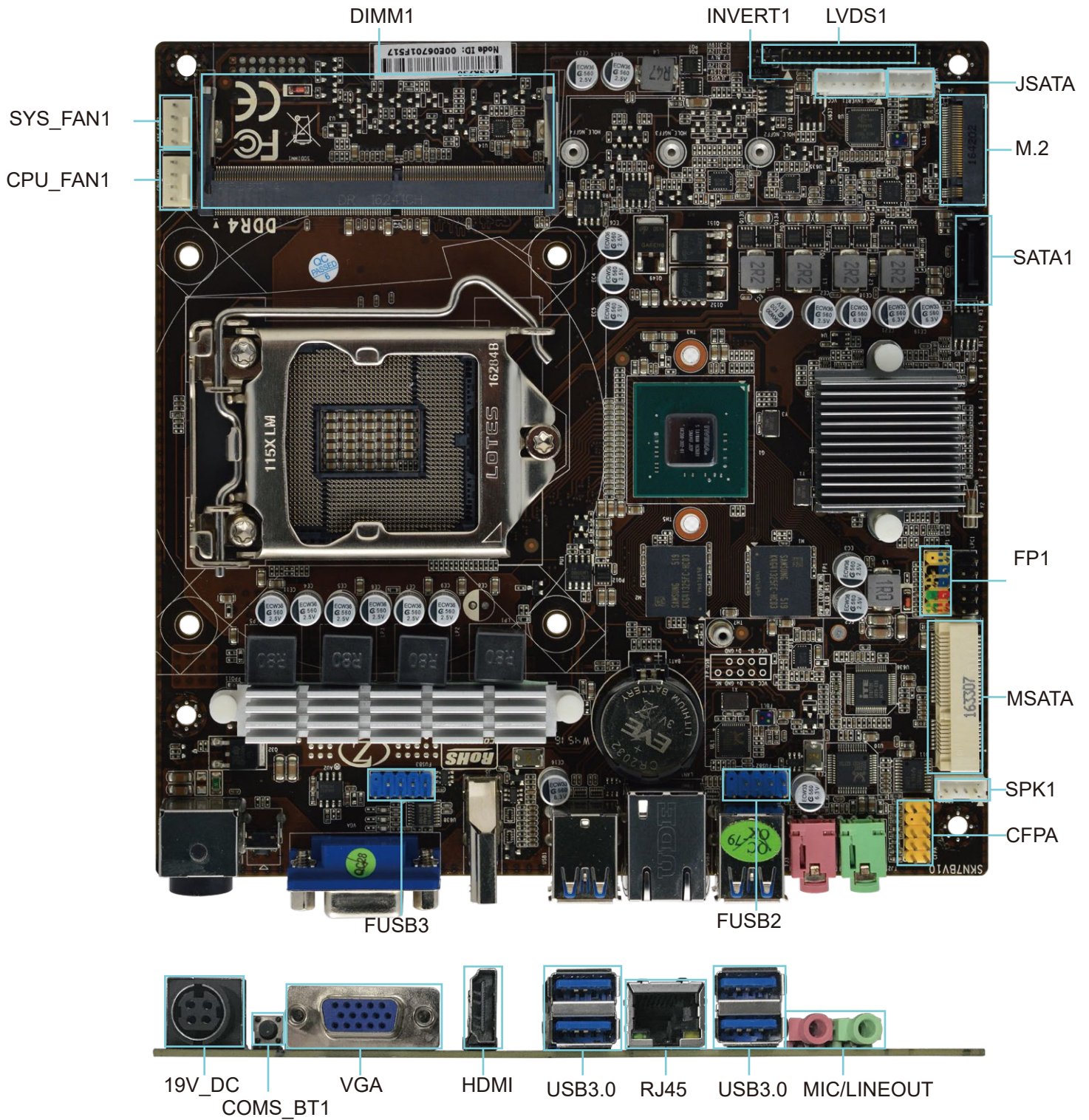


Motherboard Specification

Size	170mm x 170mm
CPU	Support Intel®6th/7th Core i7 i5 i3 Processor
Graphics	NVIDIA GTX730
Chipset	H110
Memory	1*DDR4 2133MHZ, Up to 16GB
Internal I/O	1*USB2.0 Pin 2*USB Port 1* CPU Fan 1*SYS Fan 1*LVDS Pin(support dual Channel 10 Bit) 1*SATA 1*Front panel Pin 1*Audio Pin Port (2W/CH)
Rear I/O	1* DC Power Input (19V) 1*HDMI 1*VGA 1*LAN 4*USB3.0 1* Mic-in/Line-out
BIOS AMI	AMIBIOS, 64M bit Flash Memory
MINI_PCIE	1*Support Msata 1*Support WiFi
SATA	1*SATA
LAN	1*Realtek 8111E, 10/100/1000
Audio	ALC662 Dual Channel Output
Operating System	Windows7 Windows8 Windows10 Linux
H/W Monitoring	Walk in LAN System Power Management Temperature Management Voltage Management
Humidity	0% ~ 95% (Relative Humidity, No Condensation)
Temp	-10° C ~ 55° C

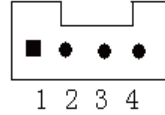
Motherboard I/O Interface Diagram

ZA-SK730 Motherboard

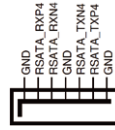


JSATA

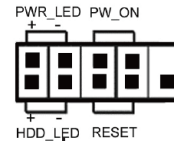
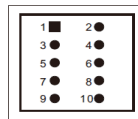
+5V 2. GND 3. GND 4. +12V



SATA



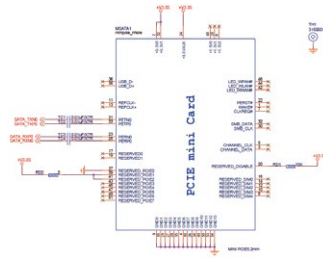
FP1



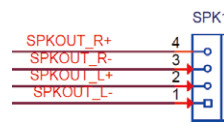
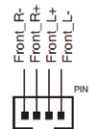
Pin	Define	Pin	Define
1	HDD LED+	2	PWR LED+
3	HDD LED-	4	GND
5	GND	6	P_SWIN
7	RESET_GND	8	GND
9	GND		

HDD Active LED:1,3 Power Button:6,8
Power LED:2,4 Reset Button:5,7

MSATA



SPEAK1

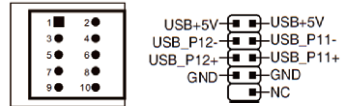


Pin	Define	Pin	Define
1	SPKOUT_L-	2	SPKOUT_L+
3	SPKOUT_R-	4	SPKOUT_R+

CFPA

Pin	Define	Pin	Define
1	PROT1L	2	SENSE1_R
3	AGND	4	SENSE_S
5	PROT1R	6	NC
7	PRESENCE#	8	PORT2L
9	PORT2R	10	SENSE2_R

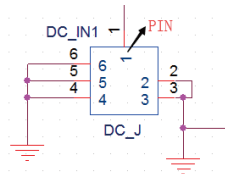
FUSB2
FUSB3



F_USB2/3

Pin	Define	Pin	Define
1	VCC	2	VCC
3	DATA 0-	4	DATA1-
5	DATA0+	6	DATA1+
7	GND	8	GND
9	NC(CUT)	10	GND

19VDC



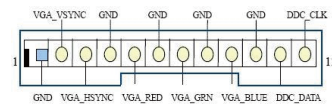
Pin	Define	Pin	Define
1	DC_IN	2	DC_J
3	GND	4	GND
5	GND	6	GND
7	GND	8	GND
9	GND		

CMOS_BT1

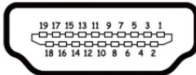
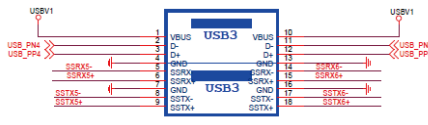
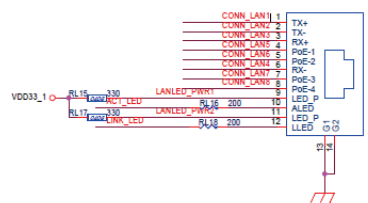
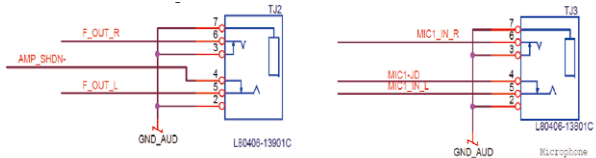


CMOS_BT1

VGA



Pin	Define	Pin	Define
1	GND	2	VGA_VSYNC
3	VGA_HSYNC	4	GND
5	VGA_RED	6	GND
7	VGA_GRN	8	GND
9	VGA_BULE	10	GND
11	DDC_DATA	12	DDC_CLK

<p style="text-align: center;">HDMI</p>	<div style="text-align: center;">  </div> <table border="1" style="margin: 10px auto;"> <thead> <tr> <th>Pin</th> <th>Define</th> <th>Pin</th> <th>Define</th> </tr> </thead> <tbody> <tr> <td>1</td> <td>TMDS data 2+</td> <td>2</td> <td>TMDS data shield</td> </tr> <tr> <td>3</td> <td>TMDS data 2-</td> <td>4</td> <td>TMDS data 1+</td> </tr> <tr> <td>5</td> <td>TMDS data shield</td> <td>6</td> <td>TMDS data 2-</td> </tr> <tr> <td>7</td> <td>TMDS data 0+</td> <td>8</td> <td>TMDS data shield</td> </tr> <tr> <td>9</td> <td>TMDS data 0-</td> <td>10</td> <td>TMDS clock+</td> </tr> <tr> <td>11</td> <td>TMDS clock shield</td> <td>12</td> <td>TMDS clock-</td> </tr> <tr> <td>13</td> <td>CEC</td> <td>14</td> <td>No connectde</td> </tr> <tr> <td>15</td> <td>DDC clock</td> <td>16</td> <td>DDC data</td> </tr> <tr> <td>17</td> <td>Groud</td> <td>18</td> <td>+5V power</td> </tr> <tr> <td>19</td> <td>Hot plug detect</td> <td></td> <td></td> </tr> </tbody> </table>	Pin	Define	Pin	Define	1	TMDS data 2+	2	TMDS data shield	3	TMDS data 2-	4	TMDS data 1+	5	TMDS data shield	6	TMDS data 2-	7	TMDS data 0+	8	TMDS data shield	9	TMDS data 0-	10	TMDS clock+	11	TMDS clock shield	12	TMDS clock-	13	CEC	14	No connectde	15	DDC clock	16	DDC data	17	Groud	18	+5V power	19	Hot plug detect		
Pin	Define	Pin	Define																																										
1	TMDS data 2+	2	TMDS data shield																																										
3	TMDS data 2-	4	TMDS data 1+																																										
5	TMDS data shield	6	TMDS data 2-																																										
7	TMDS data 0+	8	TMDS data shield																																										
9	TMDS data 0-	10	TMDS clock+																																										
11	TMDS clock shield	12	TMDS clock-																																										
13	CEC	14	No connectde																																										
15	DDC clock	16	DDC data																																										
17	Groud	18	+5V power																																										
19	Hot plug detect																																												
<p style="text-align: center;">USB3.0 USB3.0</p>																																													
<p style="text-align: center;">RJ45</p>																																													
<p style="text-align: center;">MICIN/LINEOUT</p>																																													

*Other Matters Please consult the sales.