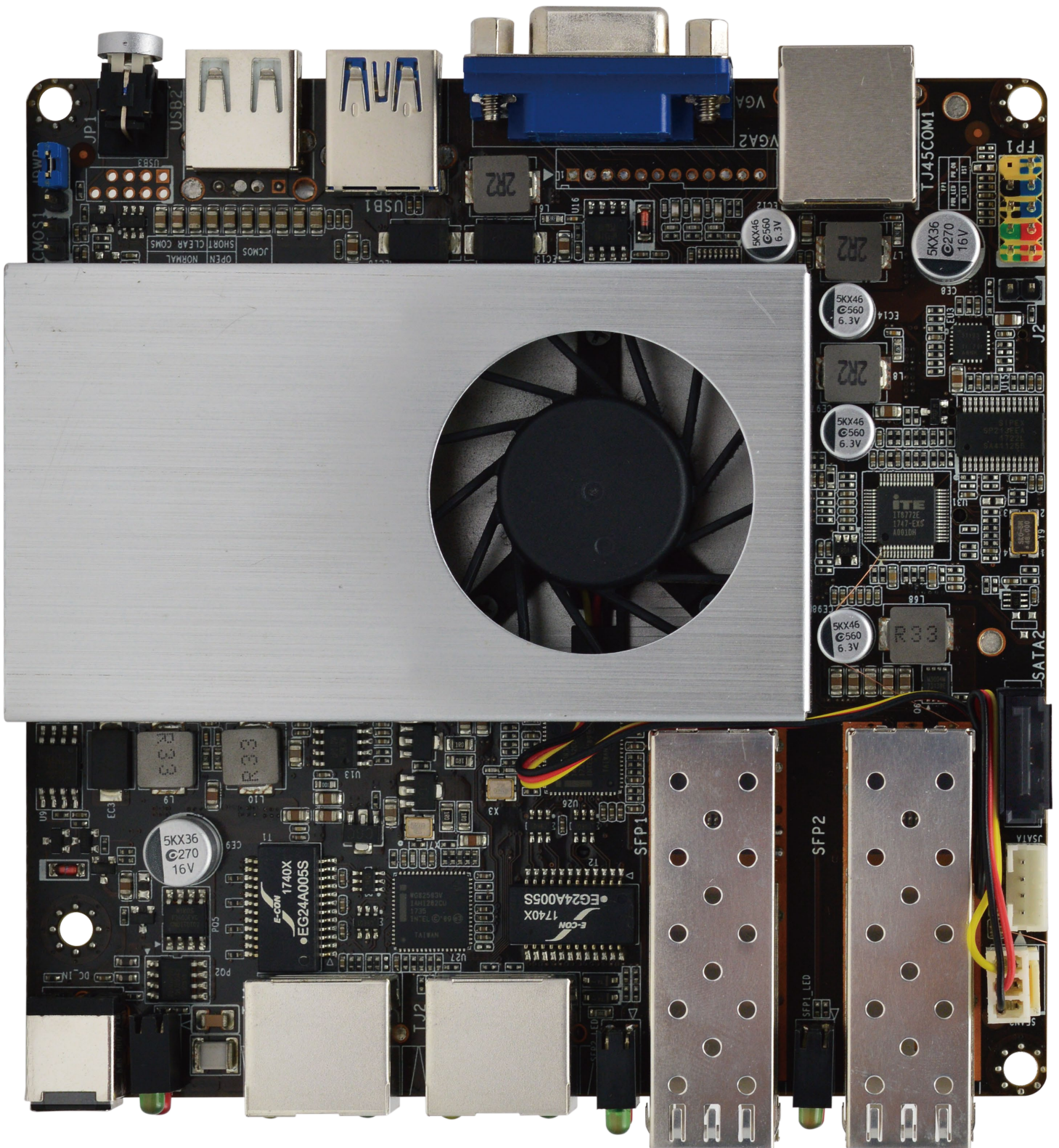


ZA-19L2G2 Motherboard

User Manual

Support Intel® J1900 2.0G Dual Core Processor

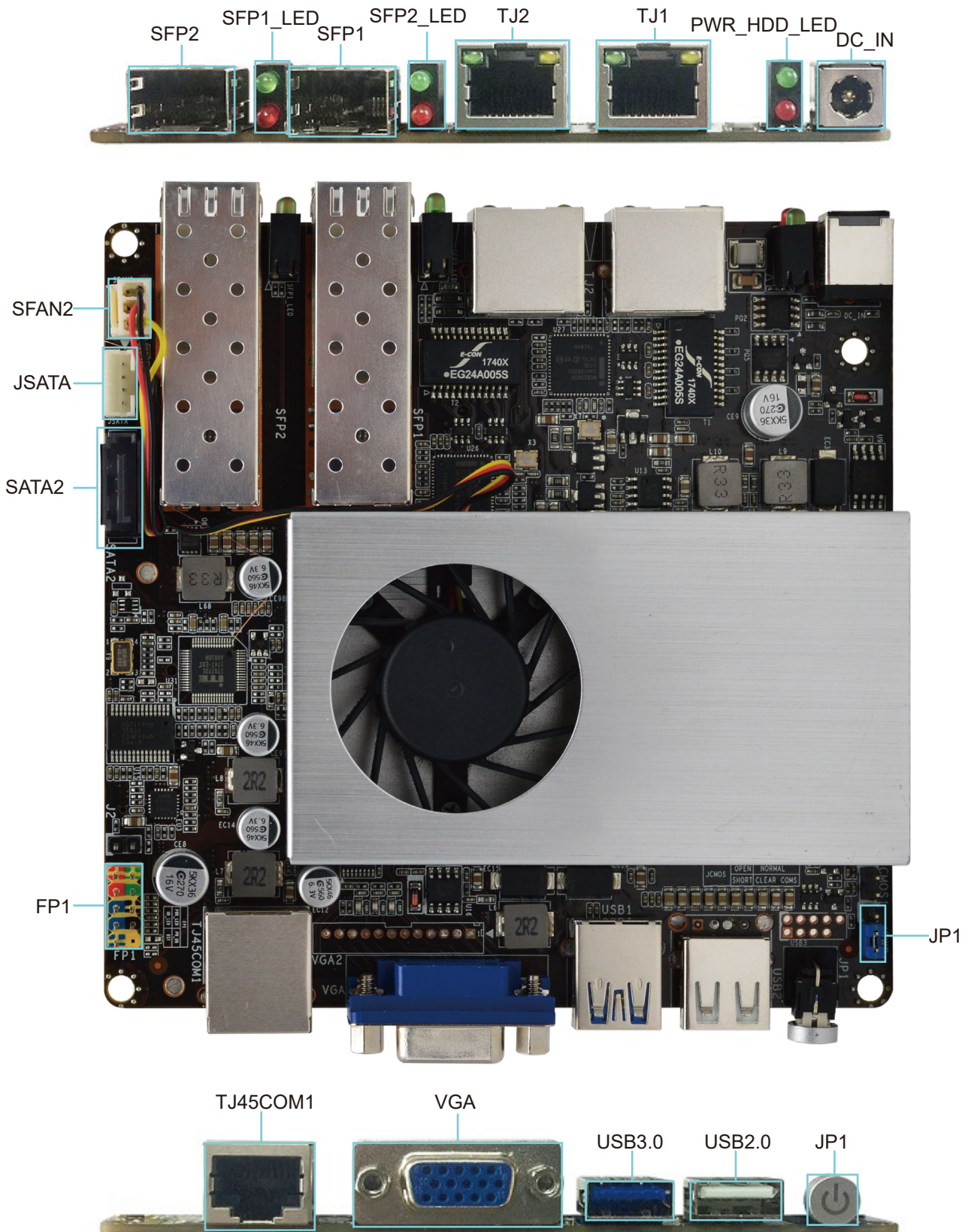
ZA-19L2G2 Motherboard Diagram



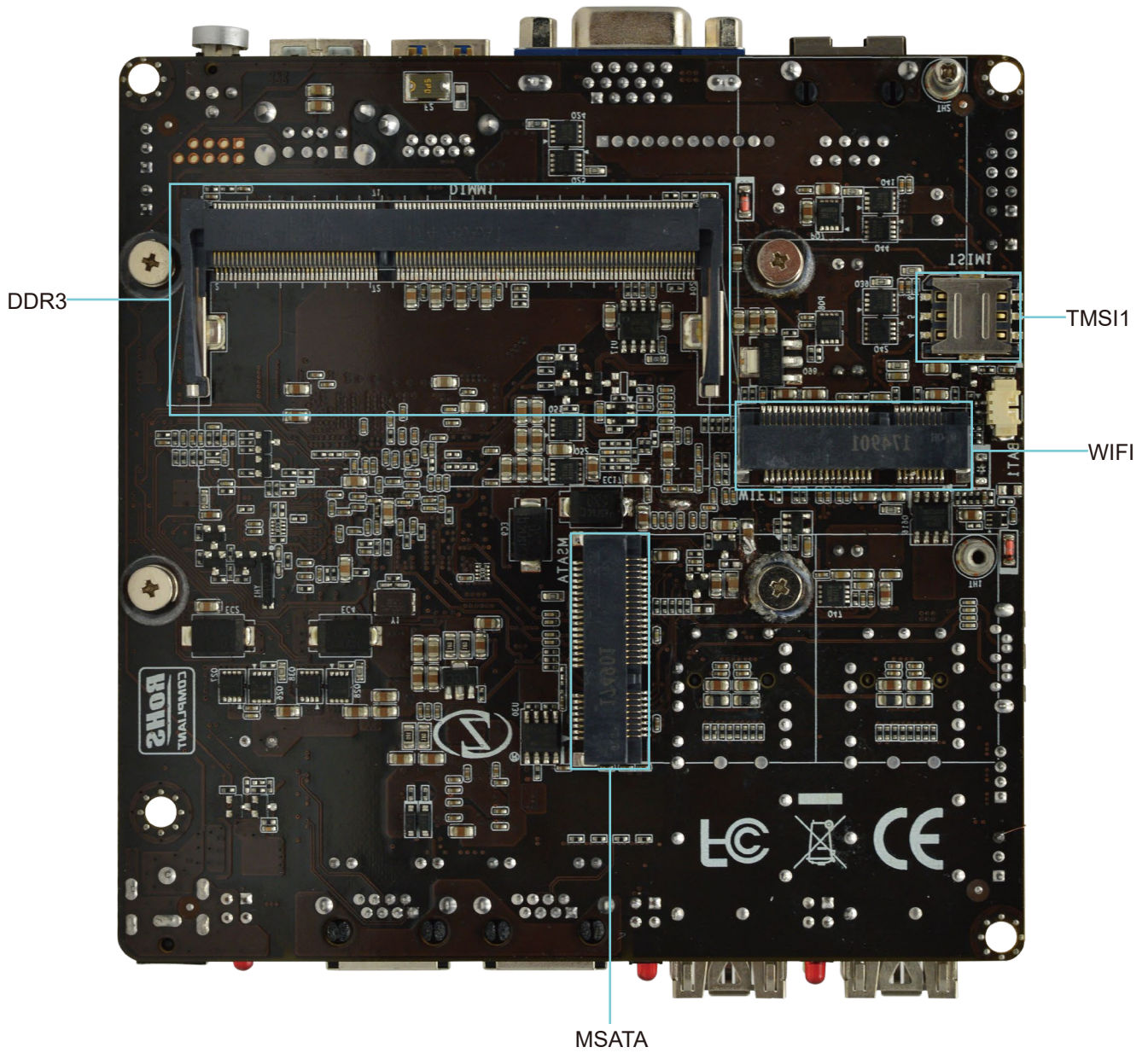
Motherboard Specification

| | |
|------------------|---|
| Size | 120mm x 120mm |
| CPU | Support Intel J1900 2.0G Dual Core Processor |
| Graphics | Intel HD Graphics 350MHZ-1GHZ |
| Chipset | J1900 |
| Memory | 1*DDR3 Slot ,1066/1600/1333MHz memory ,Up to 16 GB |
| Internal I/O | 1*CPU FAN 1*SATA |
| Rear I/O | 1*RJ45 COM1 2*LAN 1*USB2.0 1*USB3.0 2*Intel Ethernet Controller I350-AM2 gigabit fiber port |
| BIOS AMI | AMIBIOS,64M bit Flash Memory |
| MINI_PCIE | 1*Support MSATA 1*Support WiFi |
| Expansion | 1*DDR3,1*WiFi,1*TSIM1,1*MSATA |
| LAN | 2*Intel WG82583 LAN Ports 2*Intel Ethernet Controller I350-AM2 gigabit fiber port |
| Audio | ALC662 Dual Channel Output |
| Operating System | Windows7 Windows8 Linux |
| H/W Monitoring | System Power Management Temperature Management Voltage Management |
| Humidity | 0% ~ 95% (Relative Humidity,No Condensation) |
| Temp | -10°C ~ 55°C |

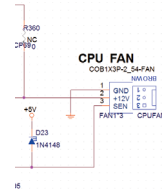
Motherboard I/O Interface Diagram



Motherboard I/O Interface Diagram



SFAN2

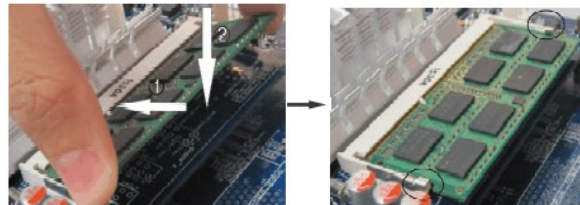


DDR3

Installation memory:

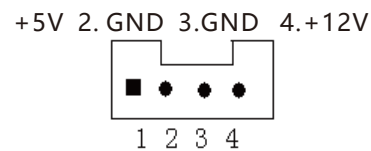
1. Please turn off the power before installing or removing the memory, and dial down the AC power cord.
2. Carefully hold both ends of the memory stick, and do not touch the metal contact above.
3. Align the gold fingers of the memory stick with the memory stick slot, and pay attention to the convex point of the gold finger socket to the upper slot in the direction;
4. Insert the memory stick 30 degrees into the memory slot, and then press the memory stick down to the sound of "click"
The memory has been installed successfully and can be used (note: press down the memory bar to avoid damaging the memory too much)

Memory installation diagram (for reference only) :

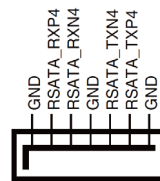


Note: static electricity damages electronic components of a computer or memory, so before following these steps, Be sure to touch the grounded metal objects briefly to remove static electricity from your body.

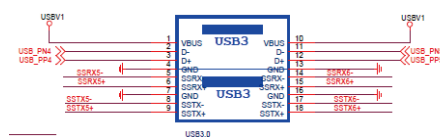
JSATA



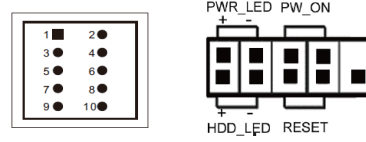
SATA 2



USB3.0
USB3.0



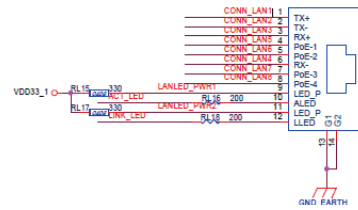
FP1



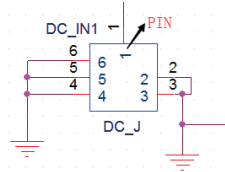
| Pin | Define | Pin | Define |
|-----|-----------|-----|----------|
| 1 | HDD LED+ | 2 | PWR LED+ |
| 3 | HDD LED- | 4 | GND |
| 5 | GND | 6 | P_SWIN |
| 7 | RESET_GND | 8 | GND |
| 9 | GND | | |

HDD Active LED:1,3 Power Button:6,8
Power LED:2,4 Reset Button:5,7

LAN

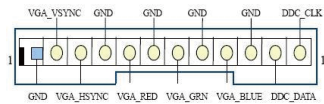


12/19VDC



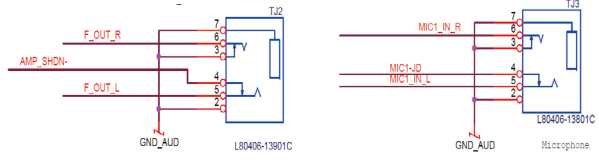
| Pin | Define | Pin | Define |
|-----|--------|-----|--------|
| 1 | DC_IN | 2 | DC_J |
| 3 | GND | 4 | GND |
| 5 | GND | 6 | GND |
| 7 | GND | 8 | GND |
| 9 | GND | | |

VGA



| Pin | Define | Pin | Define |
|-----|------------|-----|-----------|
| 1 | GND | 2 | VGA_VSYNC |
| 3 | VGA_HS_YNC | 4 | GND |
| 5 | VGA_RED | 6 | GND |
| 7 | VGA_GRN | 8 | GND |
| 9 | VGA_BULE | 10 | GND |
| 11 | DDC_DATA | 12 | DDC_CLK |

Mic-in/Line-out



*Other Matters Please consult the sales.